
LISBON PHOTO

PRIVATE & CUSTOMISED PHOTOGRAPHY TOURS



AUTUMN IS FINALLY HERE with some stunning warm colours to photograph. The sun is lower, the light is softer, perfect! This issue will focus on the following:

- Mouraria district (photo above)
- Hanging Laundry
- Warm colour tones
- Bica district
- Hints and tips on image composition
- General info

Mouraria, a lovely and mostly unknown district in Lisbon, also a delight to your lens.

Photo taken from a long distance, using a 70-200mm f2.8 zoom.

MOURARIA is one of the oldest districts in Lisbon. It stands on the oldest hill, facing North, with endless narrow streets that have a lot to discover. All lenses can be useful, we just have to match our lens to distance and vantage point.

One of my favourite image compositions is to level myself with the subject, in this case the laundry hanging in front of some lovely balconies. Mouraria has tons of photo opportunities like this (photo on the right), because the local communities keep using this old tradition.

So we want colours, of course, but also some degree of simplicity and organisation, therefore, we should use the hilly streets as a vantage point to have the laundry in front of the camera. This allows to compose with vertical lines and with side perspective - and then, if possible, to zoom into the subject, trying to apply the rule of thirds.

As we can see on the photo on the right, the laundry (the main subject) is off the center. That makes the photo more interesting.



In Lisbon, the laundry can be seen mostly within old districts.

“LISBON PHOTO is rated #1 photo tour operator in Lisbon and the reference in Portugal”

-TRIPADVISOR

East hill (Mouraria, Alfama, Castelo) is basically packed with laundry hanging, allowing some great photos.

All you need is guidance to the best areas - that's the reason why LISBON PHOTO is in business - to give you a hand.

Believe it or not, but even inside narrow streets like those in Mouraria, a long lens will give you amazing photos, most of the time from a distance, but rich in detail.

HANGING LAUNDRY is such a fascinating photo subject and Lisbon is full of it. While the West hill (Bairro Alto, Chiado) has less to see, the

Easy to photography? Not really, because of the narrow streets you will be in. So we have to take advantage of the hill and try to photograph eye level with the subject.

It is so important to “zoom with our legs”, in other words, to try to find a vantage point that will allow us to level lens and subject.

Side perspective will be perfect.

WARM TONES are always preferred by photographers and also by the viewers, because they give this feeling of comfort. Although Lisbon is a very bright city, we can now take advantage of a lower sun and play with all the colours available. Shadows can be interesting as well.

This mosaic of four photos shows a random afternoon walk in Lisbon, until sunset.



Top left we have almost an abstract, composing yellow diagonals against a blue sky. Even within narrow streets, we can compose well, because our main lines are diagonals.

We move to Alfama (top right) to investigate this little square, full of rich tones and shadow projections. Composing with three buildings, allows to get almost like a “flag” feeling, which works well with the foreground laundry.

Bottom left is a downtown photo taken from a view point and using a long lens. The idea was to find simplicity, with that strong diagonal pointing to the back building.

Finally, a lucky moment of sunset, this time at the river side.

Warm colours are everywhere, you just have to see them and then be able to isolate them from the rest of the scene.

So, cropping directly with your lens, ideally a long one, might be one more step to success.

This is the right time to plan a short trip to Lisbon and photograph all these warm tones.

BICA is that kind of district where you could spend the whole day taking photos, with a nice lunch break, from early morning to late evening. The hill is very steep, the ground, with all the tram tracks is a delight, people randomly come and leave and then we have the lift working all day long. Anything is possible, depending on weather and time of the year.

From the bottom the hill, we can compose on the lift and on the powerful gray lines on the ground; then from the top, we can see the lift and the river, with endless windows and balconies on both sides of the street.

If we are patient, we can get both units side by side, so “hunting ground” is the best way to describe this spot.

We can be creative and shoot out of the box, with low angle photos.

Combining close focus with wide apertures will give moody photos, like the one on this page. Even if you get “annoying” people in your frame, they will be blurred shapes, adding to the composition.

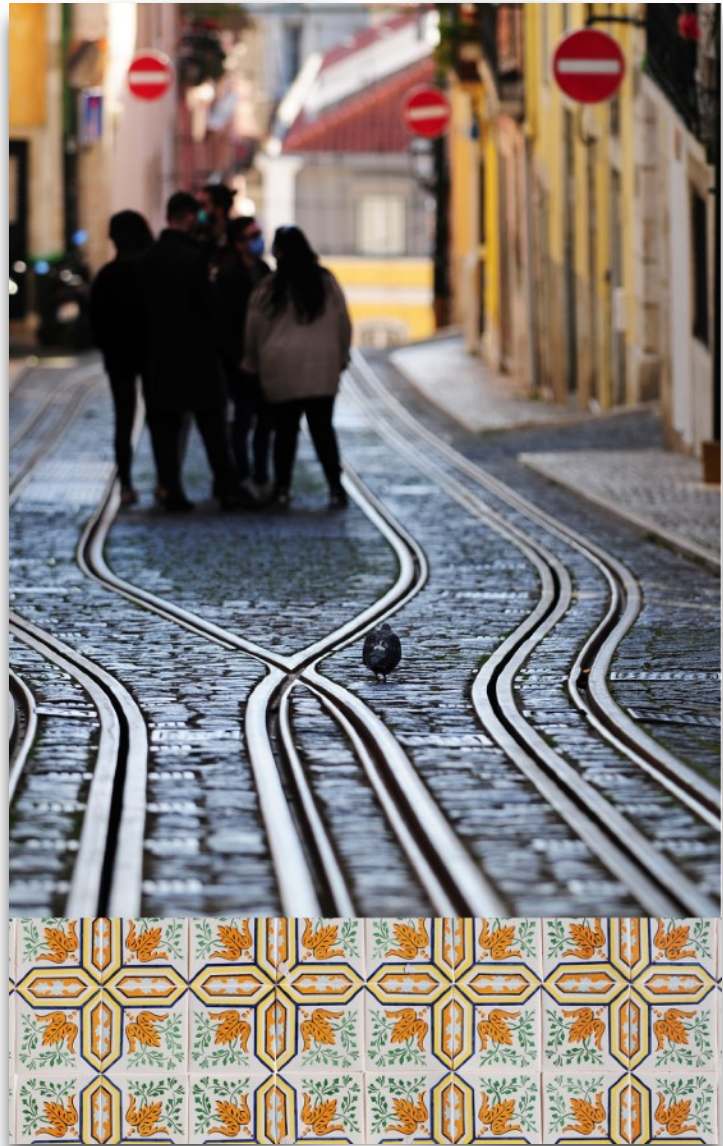
Now, let’s suppose it is raining... even better! We will have to be extremely cautious, because of the wet and slippery floor, but the glowing effects will be amazing. Rain coat, umbrella, camera preset

to a slight under-exposure (to saturate colours) and you will have the time of your life.

Bica is an all-year-around spot to photograph, but winter weather with short days and some rain is top of the game. Keep that in mind if you are planning a trip to Lisbon - LISBON PHOTO will be glad to help organising your photography plans.

“Keep it simple, your photos will quickly create the impact you want.”

-MIGUEL HELFRICH



The tram lines can give stunning images, allowing you to compose low depth of field photos.

Tiles are all over Lisbon, but mainly within the old districts. It is harder than you think, to get the perfect symmetry.

Don’t move, don’t breathe, don’t shake, align all the lines... uff!

